



TRUSTED LEADER IN INNOVATIVE ROOF COATINGS SINCE 1978.

Experts in: single ply, asphalt, concrete, foam,
metal and industrial coatings.





WHY US?

Long-Lasting & Proven Performance

We make all of our products with the highest quality ingredients from around the world. Inland Coatings has a strong history of sustainable solvent-based coating systems that have outlasted the competition.

Cost Effective & Easy to Apply

Our two pass coating systems are easy and quick to apply and are all eligible for 10- and 15- year material and system warranties. Why do a full tear off when you can repair issues, decrease energy costs and lengthen the lifespan of your existing roof?



WHO WE ARE

With forty years of experience and proven performance, Inland Coatings has grown into the industry leader in innovative solvent-based roof coatings.

Inland Coatings was founded in 1978 in Waterloo, Iowa. At that time, the company was primarily engaged in the distribution of automotive after-market products to car dealerships and body shops.

In 1980, Inland Coatings moved to the Des Moines, Iowa area, providing better access to suppliers and improved distribution capabilities. We have been at our current location for nearly 40 years, expanding our production facility and updating the equipment in 2008.

Inland's focus on corrosion protection rapidly led to products and solutions for trailer, truck body and RV manufacturers, but quickly expanded to commercial and industrial roofing systems. Our proprietary line of solvent-based roof coatings and mastics provides excellent corrosion resistance and protection for a wide variety of roof surfaces.



Inland Coatings

26259 US-6

Adel, IA 50003

800-456-8467

info@inlandcoatings.com

www.inlandcoatings.com



WHAT OUR CUSTOMERS SAY

“After experimenting with roof coatings from other manufacturers, we switched to Inland Coatings products and have used them exclusively for over ten years. In that time, we have had zero call-backs.”

- Eric, General Contractor
Nebraska

“We have been using Inland Coatings products for several years with great success. We have applied them to metal and single ply roofs with no problems. Our service crews use Inland regularly for metal roof penetrations and repairing gutters.”

- Bill, General Contractor
Ohio

RC-2000 Roofing Colors



***Solar reflective:** minimum of 70%

Color Disclaimer: We do not guarantee that the color you see accurately portrays the actual colors of RC-2000. It is highly recommended that you order a sample of your desired color first before placing the order for your roof coating.

PRODUCT GUIDE

ELASTOMERIC LIQUID RUBBER (SEBS)

<p>RC-2000 PREMIUM RUBBER ROOF COATING</p> <p>RC-2000 is an elastomeric rubber coating that works well on a variety of substrates. It is a single component product that has a class A fire rating and provides a seamless, flexible membrane.</p>	<p>RC-2012 SINGLE-PLY BASE COAT</p> <p>RC-2012 is a Single-Ply base coat that provides excellent waterproofing and reinforcement of various substrates. It is a one-component product that has excellent adhesion to properly prepared surfaces.</p>	<p>RC-2013 BASE COAT</p> <p>RC-2013 is a Metal roof coating that provides excellent waterproofing and protection. Rust inhibitors and adhesion promoters are built right into the product for excellent resistance to corrosion.</p>	<p>RC-2014 TOP COAT</p> <p>RC-2014 is formulated for top coating metal roofs. It provides excellent waterproofing and ultraviolet resistance. RC-2014 is the primary top coat for Inland's RC-2013 rubber base coats.</p>	<p>RC-2016 RUBBER ROOF COATING</p> <p>RC-2016 provides excellent waterproofing and ultraviolet resistance. RC-2016 controls corrosion and rust bleed-throughs, even after years of service.</p>
<p>RC-2018 SINGLE-PLY TOP COAT</p> <p>RC-2018 provides excellent waterproofing and UV resistance. A one-component product with excellent adhesion on properly prepared surfaces. It is thermally stable and resists cracking and peeling due to weather extremes.</p>	<p>RC-2200 RUBBER SEAM COMPOUND</p> <p>RC-2200 is a long-lasting and effective solution for sealing and waterproofing fasteners, cracks, seams and penetrations on various roofing systems. For best results, use with mesh or tape.</p>	<p>RC-2250 PREMIUM SEAM COMPOUND</p> <p>RC-2250 is a high-performing seam compound that offers excellent sag resistance and can be used on variety of substrates. Excellent for sealing curbs, penetrations, fasteners, and seams.</p>	<p>RC-2030 ROOFING SEALER</p> <p>RC-2030 is a water-based SEBS product that seals asphaltic roofing surfaces and prevents oils from bleeding through. Use on single-ply applications.</p>	<p>DF-1050 RUBBER DECK FILLER</p> <p>DF-1050 is a rubber base coat that effectively fills and smooths various roof irregularities and provide an excellent base for the application of RC-2018.</p>

METAL ACRYLIC COATINGS

<p>RC-1600</p> <p>RC-1600 is an acrylic field coat is well suited for metal roofs with a steep slope. RC-1600 will decrease energy consumption and extend the life of the roof with Inland's acrylic products.</p>	<p>RC-1650 SEAM COMPOUND</p> <p>RC-1650 is to be used over seams, fasteners and around penetrations. Use along with RC-1600 for best results.</p>	<p>RC-1675 ACRYLIC RUST PRIMER</p> <p>RC-1675 is an acrylic primer to be used where there is extreme corrosion and weathering. Use prior to installing RC-1600.</p>	<p>RC-2050 COLOR: RED</p> <p>RC-2050 is a firm, industrial based coating that works well for outlining hazardous areas and where touch-up work may be needed.</p>	<p>RC-2050 COLOR: YELLOW</p> <p>RC-2050 is a firm, industrial based coating that is used for outlining skylights, mezzanine, walkways and safety areas.</p>
--	---	---	---	---

INDUSTRIAL COATINGS

SILICONE ROOF COATINGS

<p>RC-1800 SILICONE ROOF COATING</p> <p>RC-1800 creates a seamless, breathable membrane that resists ponding water and seals against leaks and severe weather. A single-component, high solid silicone coating that provides high solar reflectance and can be re-coated.</p>	<p>RC-1850 SILICONE SEAM COMPOUND</p> <p>RC-1850 seals fasteners, cracks, seams and penetrations. It is strong, yet flexible for handling seasonal expansion and contraction. RC-1850 is also a great choice for roof repair on PVC and EPDM substrates.</p>	<p>RC-1875 SILICONE BLEED BLOCK</p> <p>RC-1875 is to be used whenever there is a chance for asphaltic bleed through. It inhibits oils and plasticizers from discoloring the roof topcoat.</p>	<p>RC-2070 NON-ASPHALTIC, RUBBERIZED PAINT</p> <p>RC-2070 is a triple duty, bright, non-asphaltic, non fibered, rubberized aluminum paint for metal roofs, fences, tanks, road equipment and structural steel.</p>	<p>RC-2075 FIBERED COATING</p> <p>RC-2075 is a premium, bright, fibered, heavy duty, spray or brush applied aluminum roof coating for sloped metal, composition and built-up roofs.</p>
---	--	---	--	---

ALUMINUM COATINGS

WATERPROOFING & SEALANTS

<p>CR-2150 WATERPROOF SEALER 5% SILICONE</p> <p>CR-2150 is a clear water repellent sealer containing a 5% silicone solutions that will not change the color of brick, stone or masonry.</p>	<p>CR-2200 TRU-LASTIC SEALANT CAULK</p> <p>CR-2200 is an elastomeric caulk with excellent adhesion and flexibility. No primer required. Ideal for caulking around windows, vents, gutters and seams. Comes in 11oz and 22oz sausage tubes.</p>
---	--

SKYLIGHT

<p>CR-2100 RUBBER SKYLIGHT COATING</p> <p>CR-2100 is a proprietary elastomeric coating that works excellent for restoring skylights. Prevent premature aging and damage by using CR-2100. May be used for repair and restoration.</p>

ACCESSORIES

<p>RC-300 CLEANER/DE-GREASER</p> <p>RC-300 is an eco-friendly and biodegradable cleaner that will properly prepare your roofing membrane for coating. RC-300 emulsifies contaminants and provides improved surface preparation by removing oil, grease, mildew and other soils.</p>	<p>RPM POLYESTER MESH</p> <p>RPM-200: 2" x 1 80' RPM-400: 4" x 180' RPM-600: 6" x 180' RPM-4000: 40 " x 324'</p>	<p>RST SERIES SEAM TAPE</p> <p>RST-200 Tape: 2" x 50' RST-400 Tape: 4" x 50'</p>
---	---	---

ROOF APPLICATION GUIDELINES: TEN-YEAR SYSTEMS

ASPHALT



Step One
Power wash roof at 1,500 PSI and remove any loose dirt and debris. Some surfaces will need a spot treatment of our **RC-300 cleaner**



Step Two
Apply RC-2250 to all penetrations and potential leak points



Step Three
Apply DF-1050 Base Coat at 1.5 to 2 gallon per 100 square feet - over the entire roof surface



Step Four
Apply RC-2018 Top Coat at 1.5 gallons per 100 square feet - over the entire roof surface

SINGLE-PLY



Step One
Power wash roof at 2,000 PSI and remove any loose dirt and debris. Some surfaces will need a spot treatment of our **RC-300 cleaner**



Step Two
Apply RC-2250 to all penetrations and potential leak points. EPDM surfaces will need all seams addressed with **RC-2250** and/or 4" Butyl tape



Step Three
Apply RC-2012 Base Coat at .75 to 1 gallon per 100 square feet - over the entire roof surface

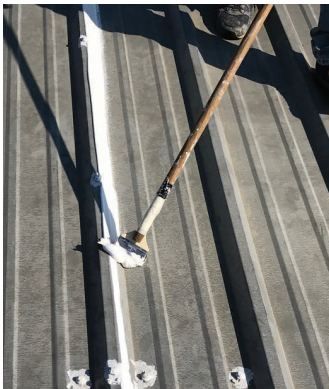


Step Four
Apply RC-2000 Top Coat at 1 to 1.25 gallons per 100 square feet - over the entire roof surface

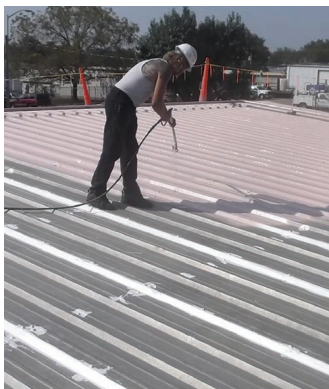
METAL



Step One
Power wash roof at 3,000 PSI and remove any loose dirt and debris



Step Two
Apply RC-2250 to all seams, fasteners and penetration points



Step Three
Apply RC-2013 Base Coat at 1 gallon per 100 square feet - over the entire roof surface



Step Four
Apply RC-2014 Top Coat at 1 gallon per 100 square feet - over the entire roof surface

WHY SEBS PRODUCTS?

Easy application process

All products can be sprayed or rolled in our easy four-step processes

Excellent elongation and tensile strength

500%+ Elongation and 1,500 PSI+Tensile Strength

0% water swelling, low permeability

Strong resistance to ponding water

No primers needed

Saves money and time during installation

Lower temperature applications

Can be applied in 40 degrees Fahrenheit and above

10- and 15- year warranties

True waterproofing systems

High solar reflectance

Industry leading 87% reflectance
= cool roofs = longer roof life

